



# INSOLINA

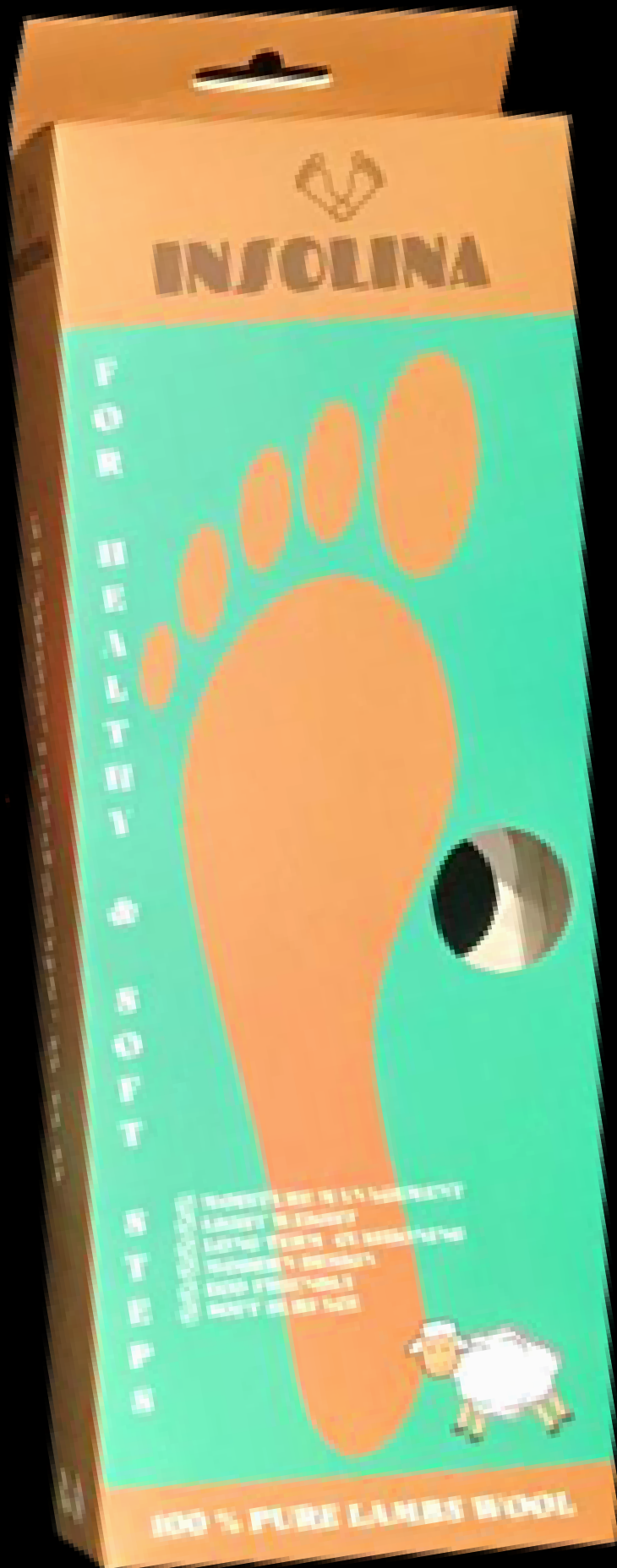


- ✓ Moisture Management
- ✓ Light Weight
- ✓ Eco-Friendly
- ✓ Soft Surface

## For Healthy & Soft Steps

100 % SHEEPSKIN INSOLE





# Why Should We Use Sheepskin Insoles?

In the cold winter months, we offer you health and comfort together with our specially produced Insolina shearling insoles to keep your feet warm.

It prevents your feet from sweating with the breathing feature of natural sheepskin, and with its soft fur on it, it gives you the feeling of being on the clouds whenever your feet touch it.

Everyone can use this product with its antibacterial and hypoallergenic structure coming from the naturalness of sheepskin. It doubles the comfort you experience in your shoes by supporting your foot with its anatomical structure.

It protects you from cold weather, prevents you from getting sick and always keeps you warm. In addition, with its non-slip sole, it does not deform in the shoe and supports you by keeping you in balance.

The most important thing is your health!

Insolina Insoles are produced from LWG (Leather Working Group) certified sheepskins. The base material is polyurethane, and the ingredients are obtained from suppliers that provide materials that comply with REACH standards.





# RECYCLE SOLE

**Sustainability is the most important criterion for us!**

Recycle soles are made by recycable materials.

Its Shock Point support your heel and  
Protects from shocks caused by prolonged  
standing

It is suitable for boots and work shoes



- **Light structure**
- **Eco-friendly**
- **Long term cushioning**
- **Moisture management**
- **Flexible**
- **Modern design**
- **Shock Point**





# PU SOLE

PU soles made by polyurethane.  
It is a model that has been used for years.



Choosing the right isole for your foot healht is an important thing.  
Thus this PU Insoles are the right choice for you.  
It has heel suppor and side leg support.  
PU insoles has thick and comfortable structure.  
It is produced to our environmet standards.





# FELT SOLE

Classical felt soles are ready for you!



Felt Insoles are the combining of natural sheepskin and felt. It has a classical model for using. Felt has a flexible and light structure. It is suitable for using in the boots and work shoes.



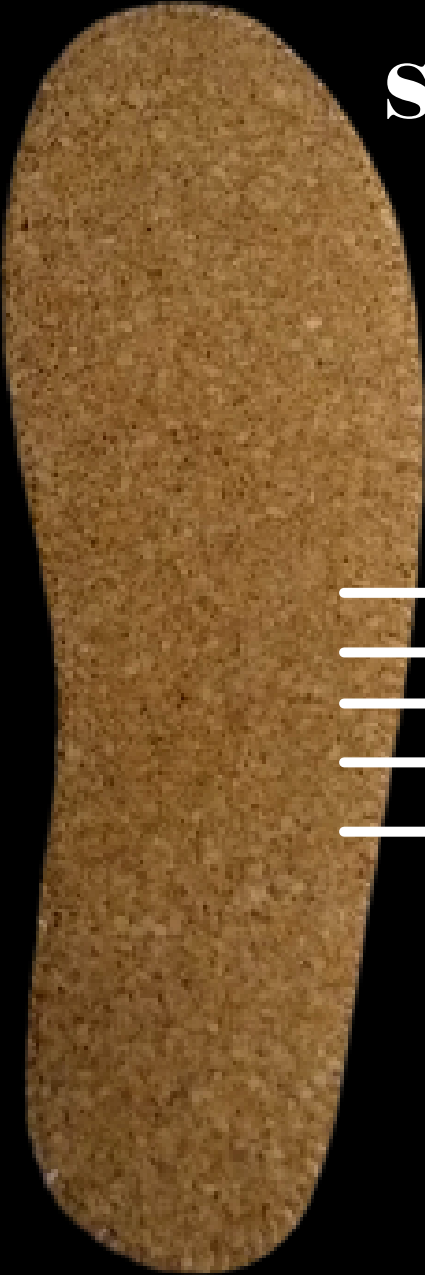


# CORK SOLE

**We combined the  
sheepskin with the  
cork!**

Cork In soles made by cork sheets and  
sheepskin.

It has a completely natural structure and  
suitable for boots and work shoes

- 
- Breathable
  - Flexible
  - Natural
  - Light weight
  - Eco-friendly





# FUR COLOR CARD

We can procude special fur for the insoles based on the desire of our customers



**MADRID-201**



**MIAMI-202**



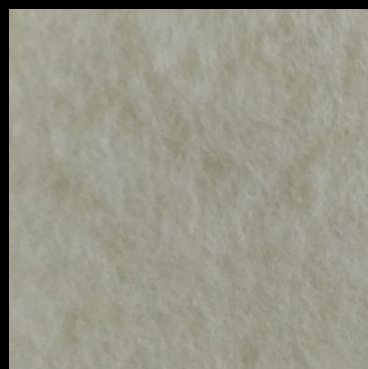
**OSLO-203**



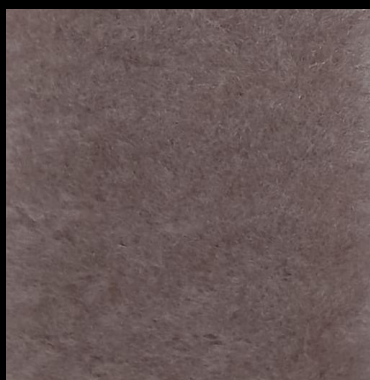
**QUEBEC-204**



**TORINO-205**



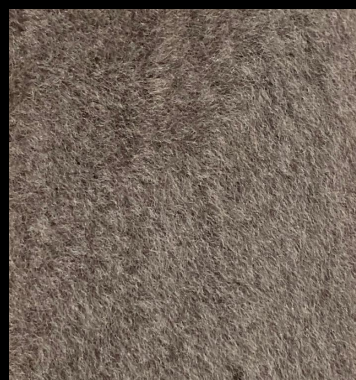
**VIENNA-206**



**TOKYO-207**



**LYON-208**



**RIO-209**



# FUR COLOR CARD

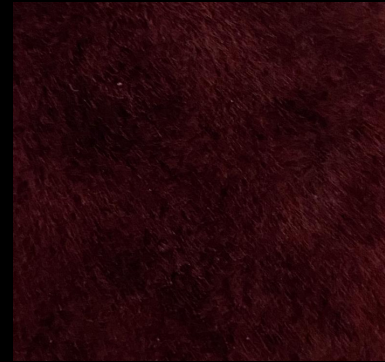
We can procude special fur for the insoles based on the desire of our customers



**PRAGUE-210**



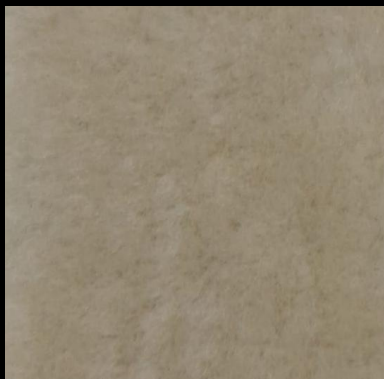
**LISBON-211**



**ROME-212**



**SIENA-213**



**MALAGA-214**



**ZURICH-215**



**DALLAS-216**



**BERLIN-217**



**PARIS-218**



# FUR COLOR CARD

We can procude special fur for the insoles based on the desire of our customers



**KOLN-219**



**NICE-220**



**MILANO-221**



**CURLY-222**



**CURLY-223**



**CURLY-224**



**MINSK-225**



**KIEV-226**



**LINZ-227**